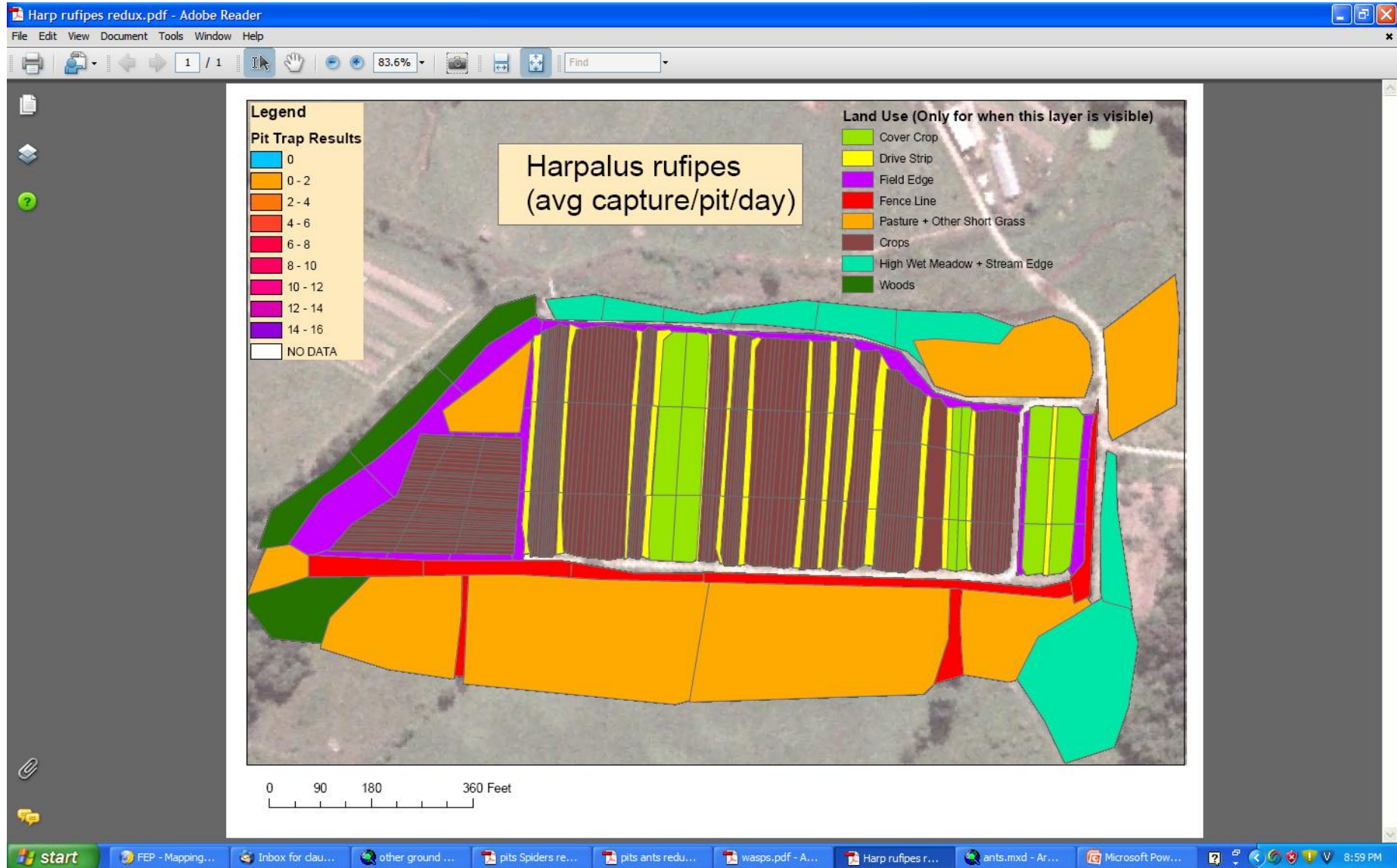
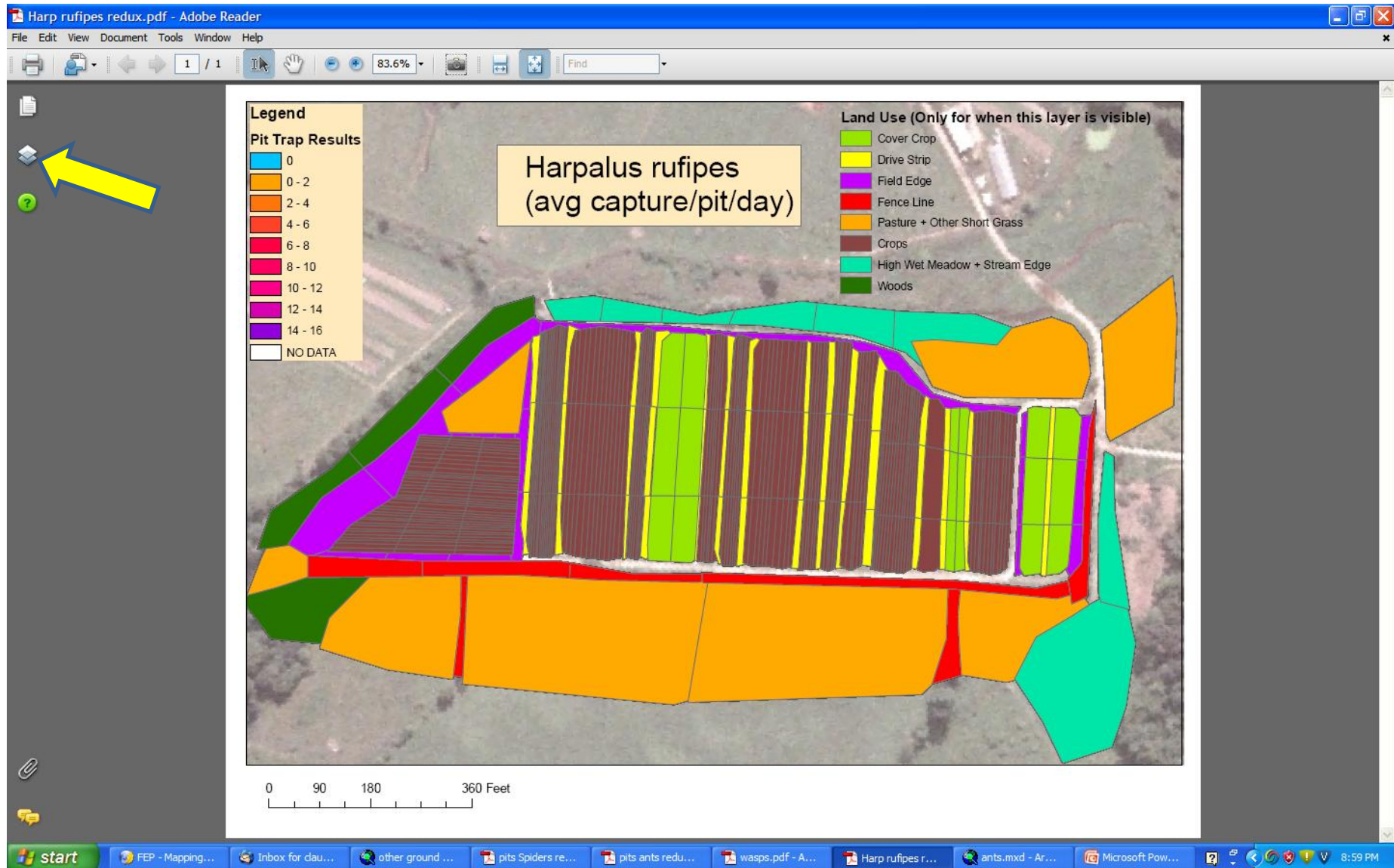


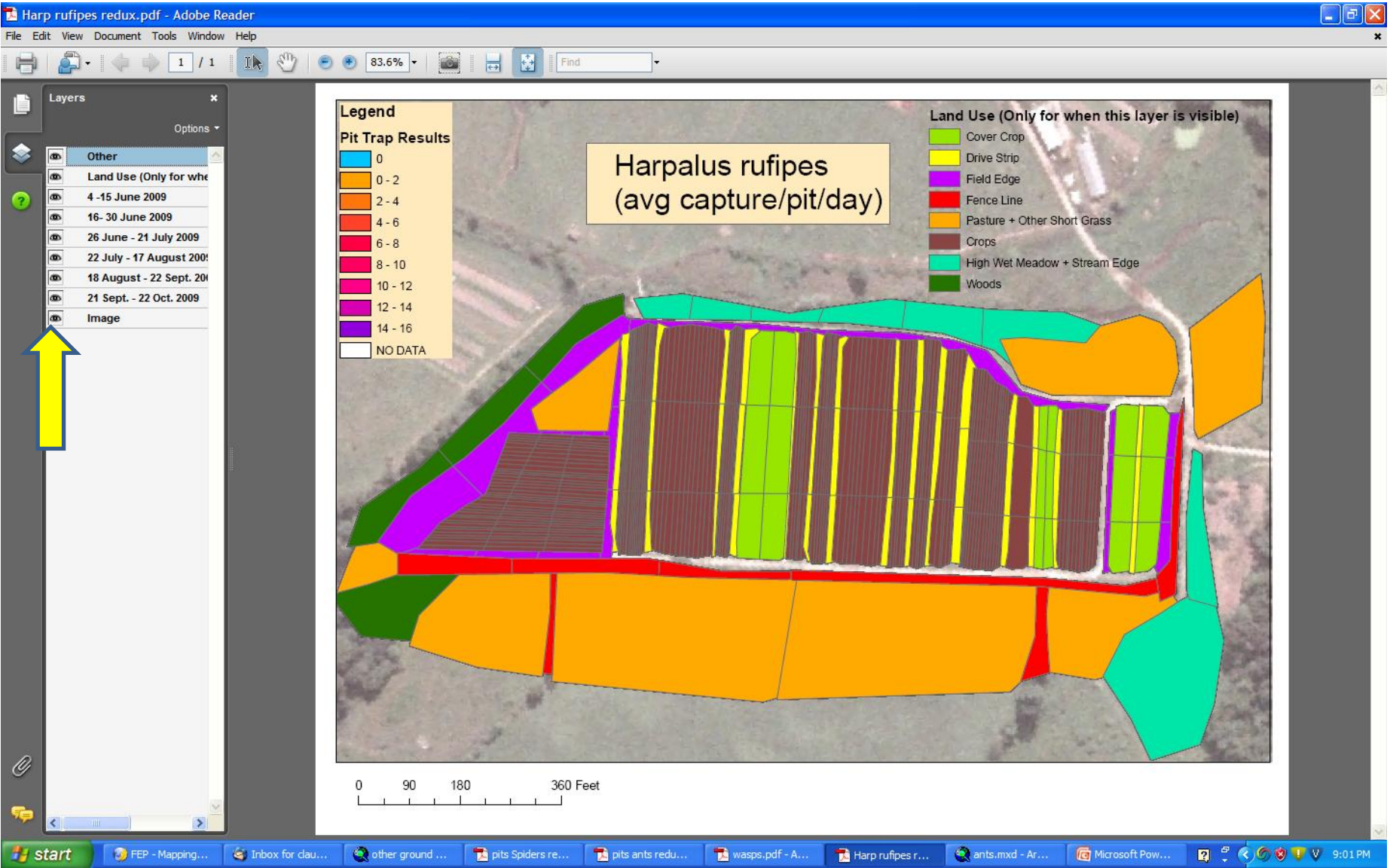
Opening up the file in Adobe Reader 8 should produce a start-up page like this. If not, make sure that you are neither in full screen mode nor in reading mode.



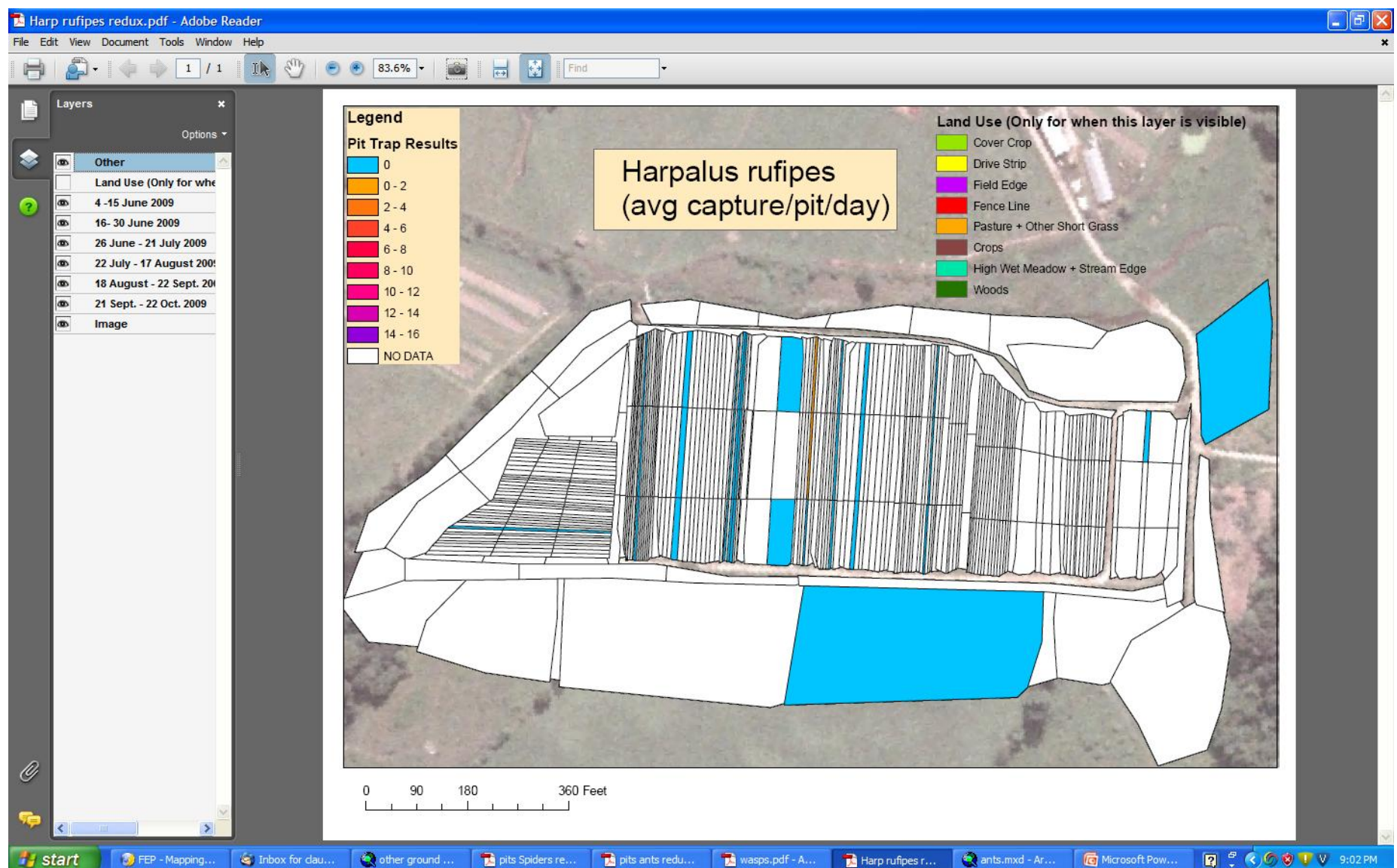
Click on the layers symbol in the upper left had corner; this appears as a set of stacked pages.



That should reveal the list of layers present in the document. To the left of each layer is the symbol of an eye; you can turn each layer on and off by clicking on the corresponding eye.

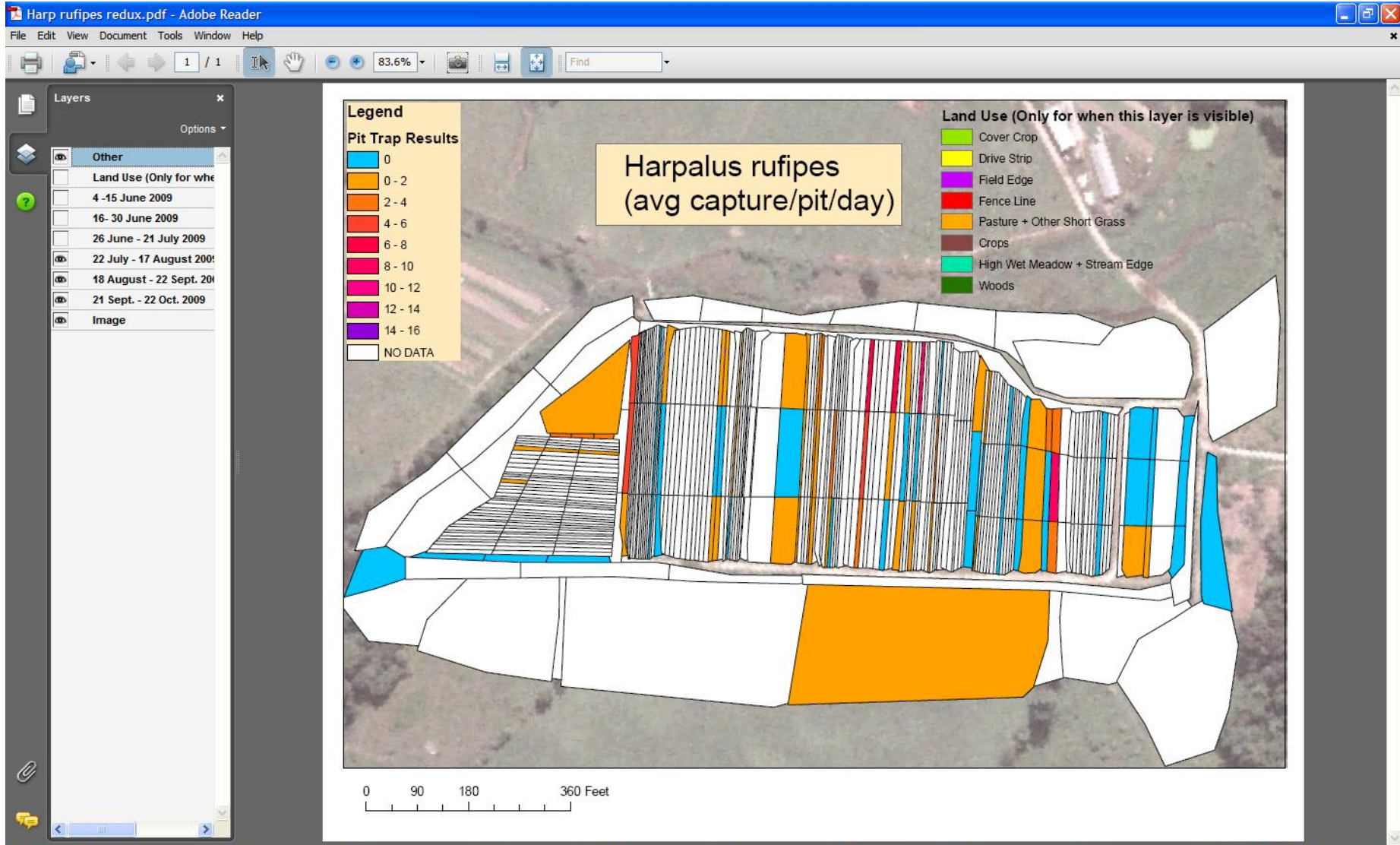


The top layer (titled "other") is the legend, leave it on; the bottom layer (named "image" is the background photo, leave it on too). The second layer from the top, and the one that you see



when you first open the file, is the habitat map. Above, I have clicked off that layer to reveal the distribution of this beetle for 4 – 15 June.

It is as if you are looking down on the top of a layer cake as you slowly eat the layers off. The visible layer is whatever 'on' layer is uppermost; in this image I have 'eaten' my way down to



to the layer for 22 July – 17 August. This map shows where we captured this beetle during that period. You can click the layers in any order, just remember that what you see is the uppermost layer (and recall that the “Other” layer is just the legend and so doesn’t really count.)